

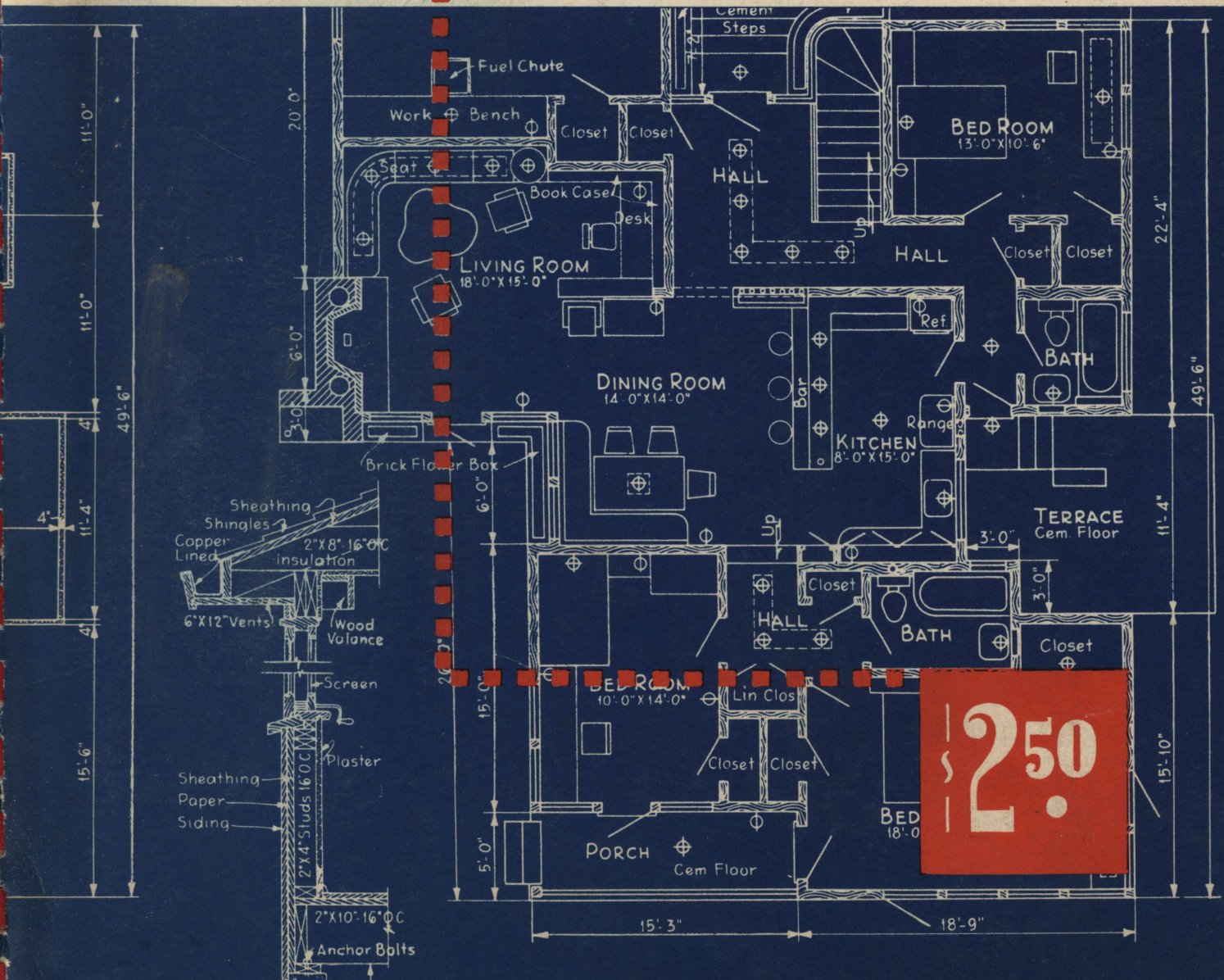


# Blueprint

# PLANS

FROM AMERICAN BUILDER MAGAZINE

12 COMPLETE BLUEPRINTS  
21 HOMES - 7 GARAGES



250



# Blueprint Plans

FROM AMERICAN BUILDER MAGAZINE



Published By

**AMERICAN BUILDER**

A Simmons-Boardman Publication

105 W. Adams St., Chicago 3, Ill.

The World's Greatest Building Paper



# Foreword

**N**EVER before has a plan book of this character been offered to home builders and home seekers.

Presented here are twelve complete blueprints suitable for accurately estimating the construction costs of these attractive homes and garages.

All the homes in this book have been designed by nationally famous architects and selected from the pages of **American Builder**. They are exceedingly well planned and are adaptable to any climate both as to style and construction.

Other pages are devoted to interior suggestions, built-ins and snack bars.

**American Builder** takes pride in being able to offer this comprehensive plan book to its readers and others. Complete quarter-inch scale plans are available through the **American Builder** plan service on some of the designs presented. We suggest you consult with your local builder, dealer or architect regarding any home you may select with the idea of building.

We feel sure you will find this book of great value in selecting a home that will be architecturally correct in design and construction and give years of lasting value to its owner.

—The Editors.

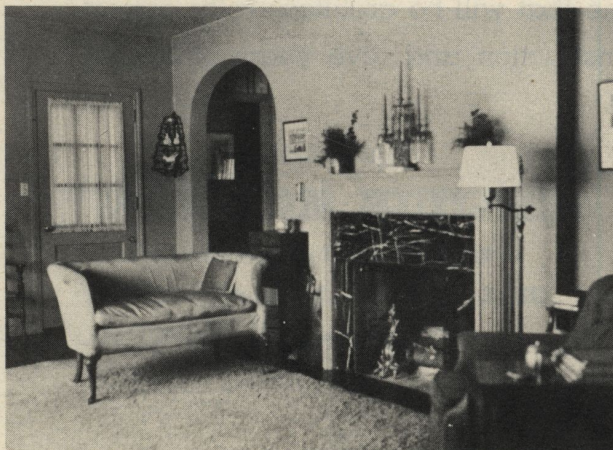




BROAD, horizontal lines are further emphasized by the low, sweeping roof and a large picture window.

## A Modern Adaptation of a French Farm House

**This house, designed by Philip Maher, Chicago architect, has the freedom of contemporary planning, and still retains the classic balance that is reminiscent of best of old world atmosphere**



A GRACEFUL fireplace mantel adds character to the living room.

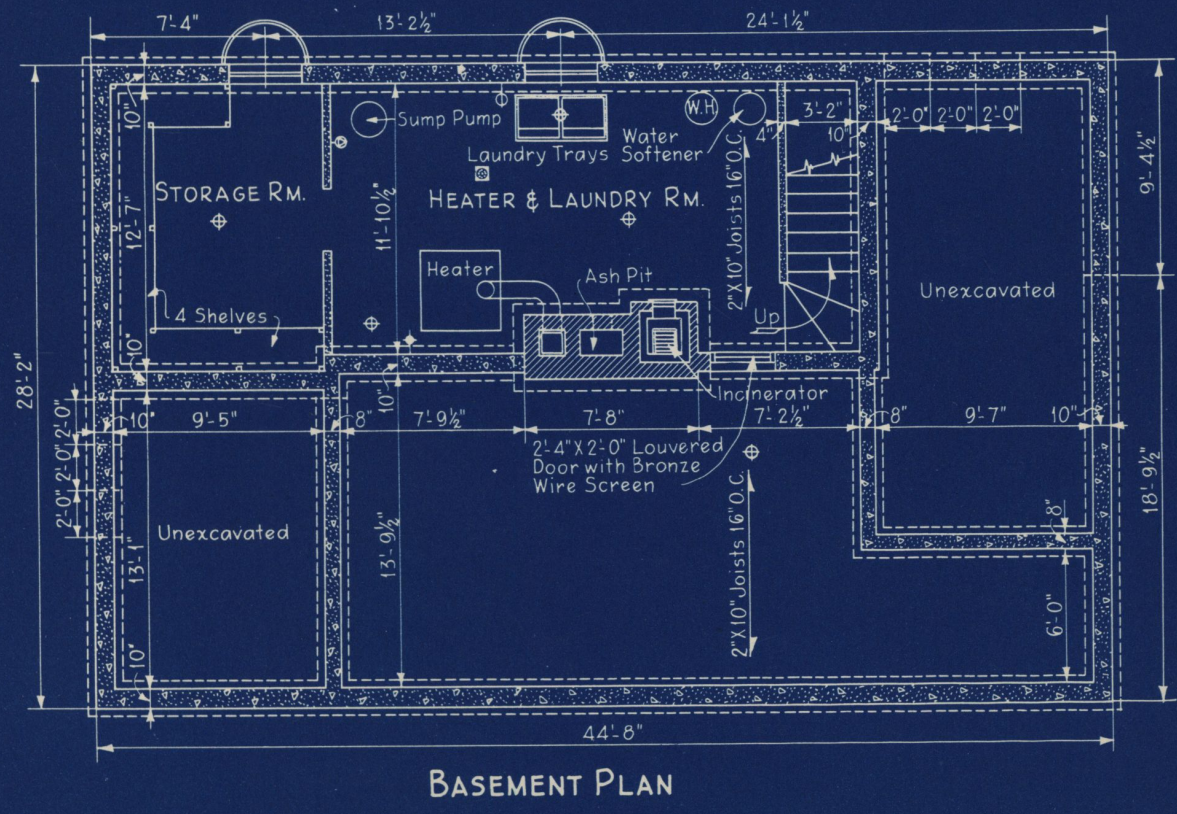
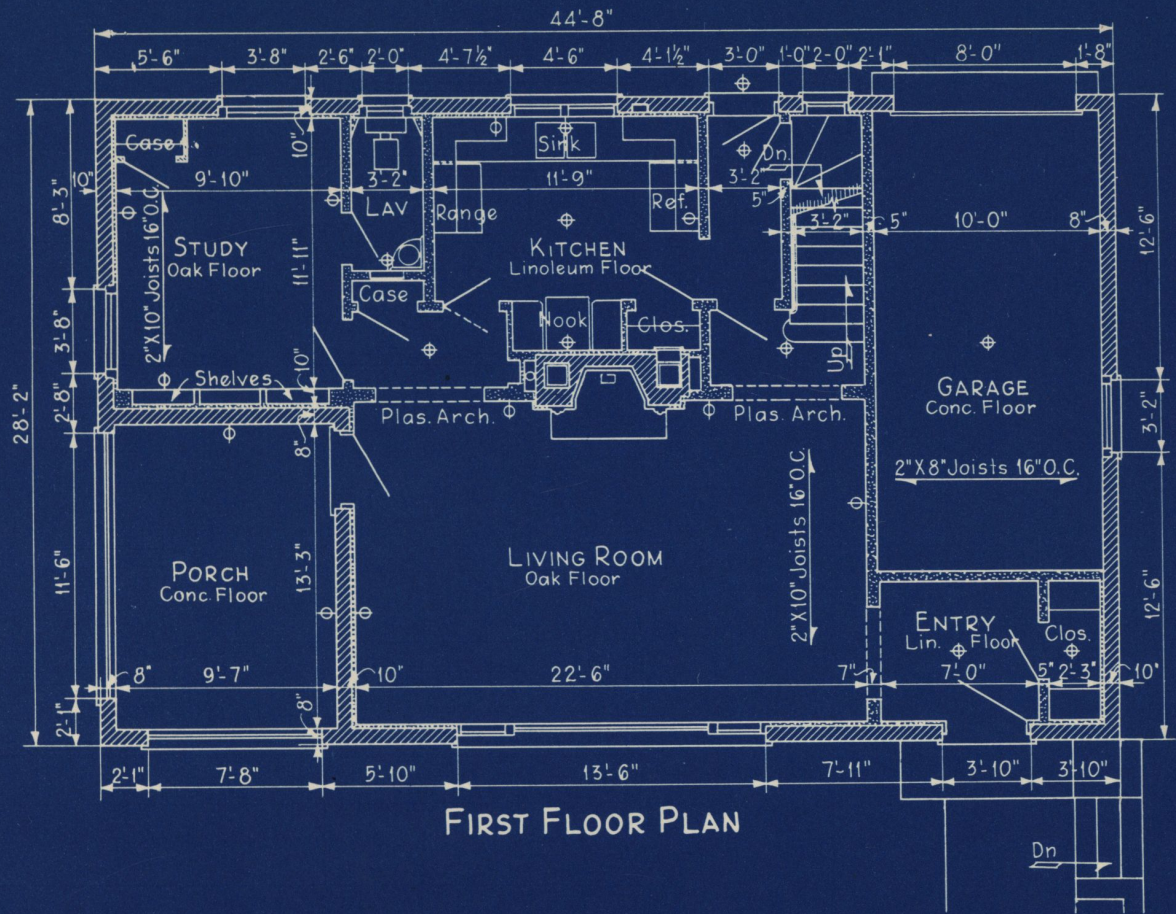
**T**HE characteristics of the French farm house with variations to adapt the style to modern materials and conditions were used by Philip B. Maher, Chicago architect, in designing this comfortable house for A. J. Janata, Urbana, Ill. The builder was Frank J. Schwartz, also of Urbana.

Perfect symmetry was obtained in the front elevation by clever handling and treatment of the window and door units. Blinds flanking the entrance door balance the porch opening at the opposite side, and the large living room window centered under the middle dormer acts as a focal point of symmetry. The window, in addition to this function and that of providing ample daylight for the interior, also emphasizes the horizontal lines of the front elevation, which are heightened further by quoins on both sides of the entrance and porch.

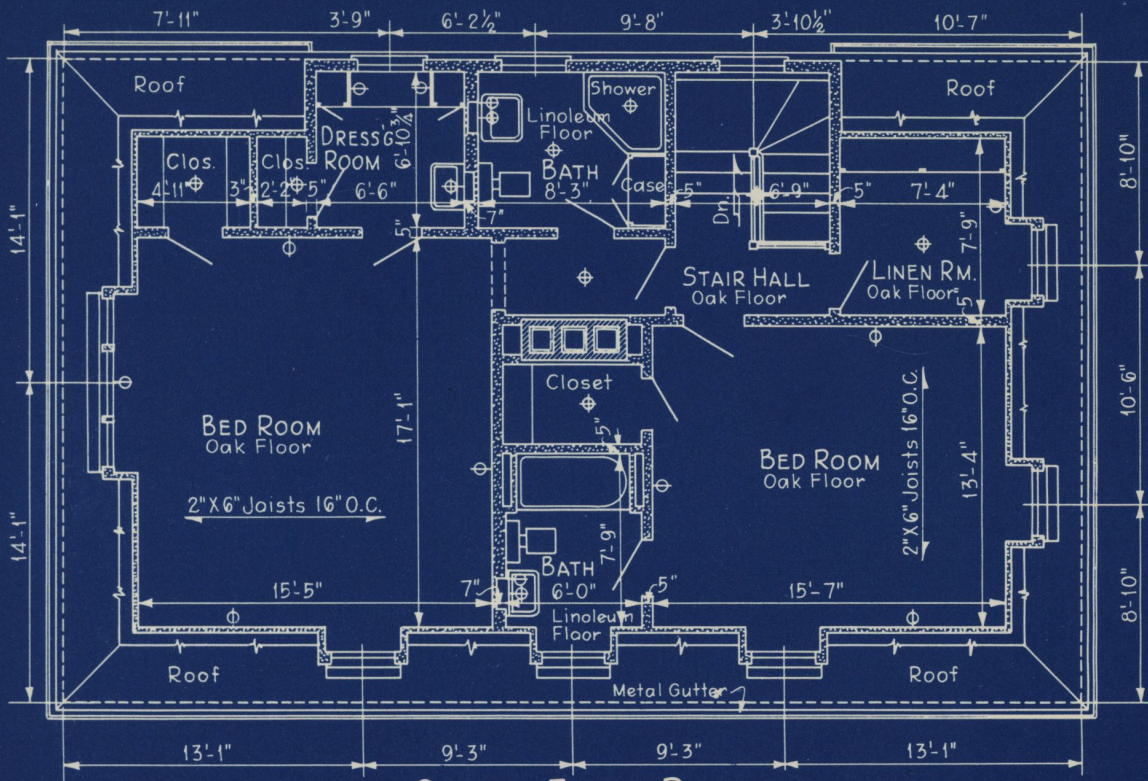
The exterior walls are common brick painted white. The roof is covered with asphalt shingles in a deep maroon, providing a pleasing contrast to the walls.

The chief characteristic of the plan is compactness which is achieved without sacrifice of easy circulation from room to room. The unusual location of the front stairway permits it to be included in the large dormer at the rear of the house, and allows ample space for two large bedrooms on the second floor.

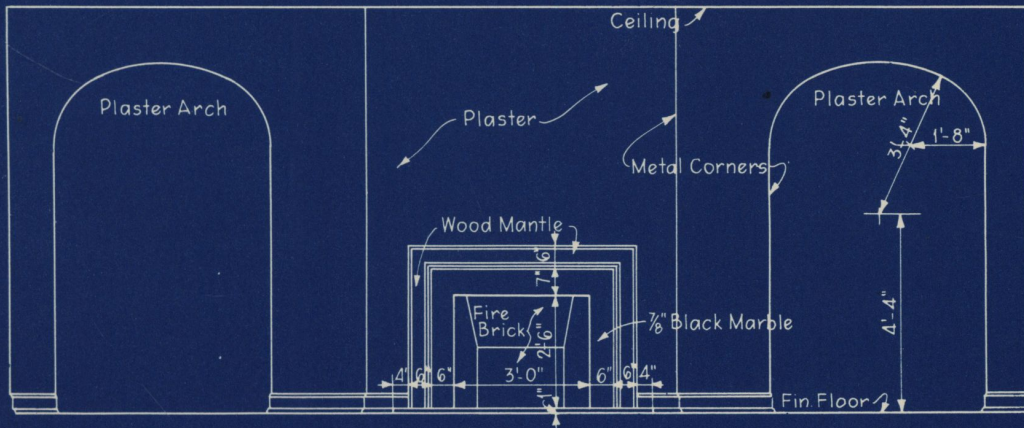




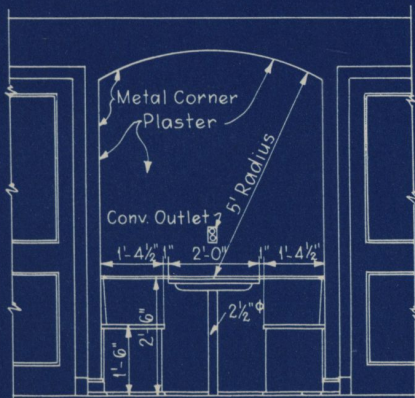




SECOND FLOOR PLAN



NORTH ELEVATION OF LIVING ROOM



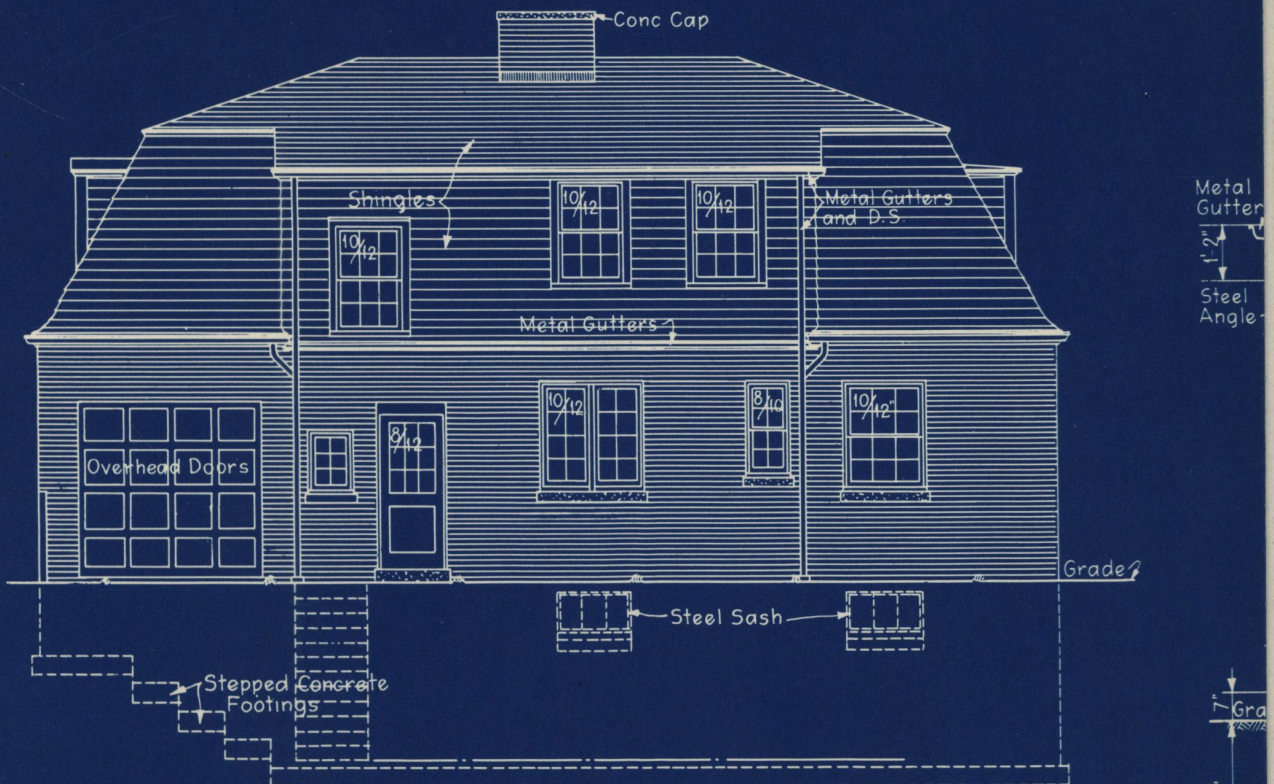
DINING NOOK IN KITCHEN

DESIGN No. AB 103  
 AMERICAN BUILDER BLUE PRINT SERIES  
 Designed By  
**PHILIP B. MAHER** ARCHITECT  
 167 E. Erie St. Chicago, Illinois.  
 Simmons Boardman Pub. Corp. 105 W. Adam St. Chicago, ILL.





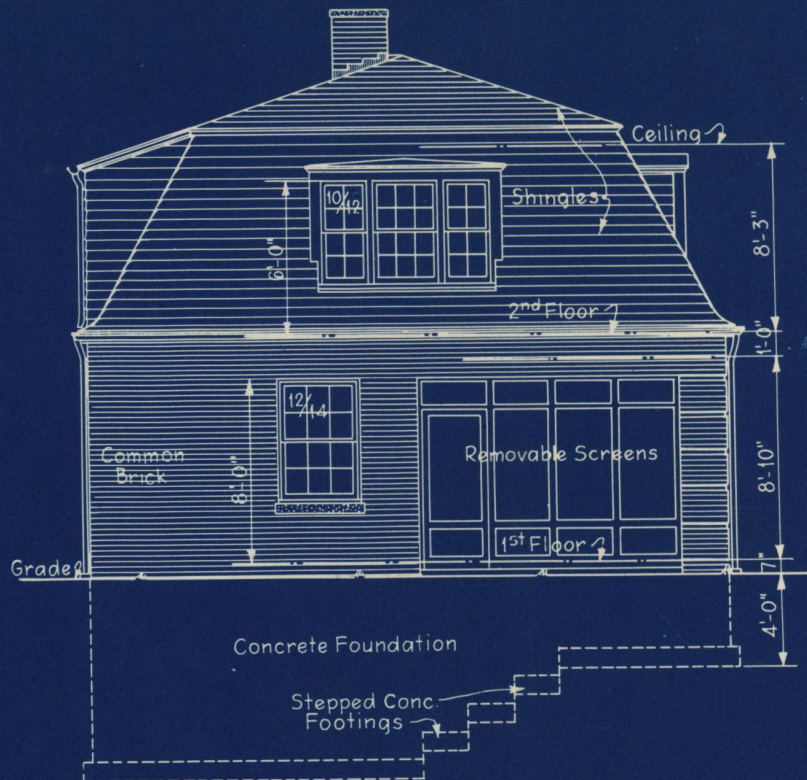
FRONT ELEVATION



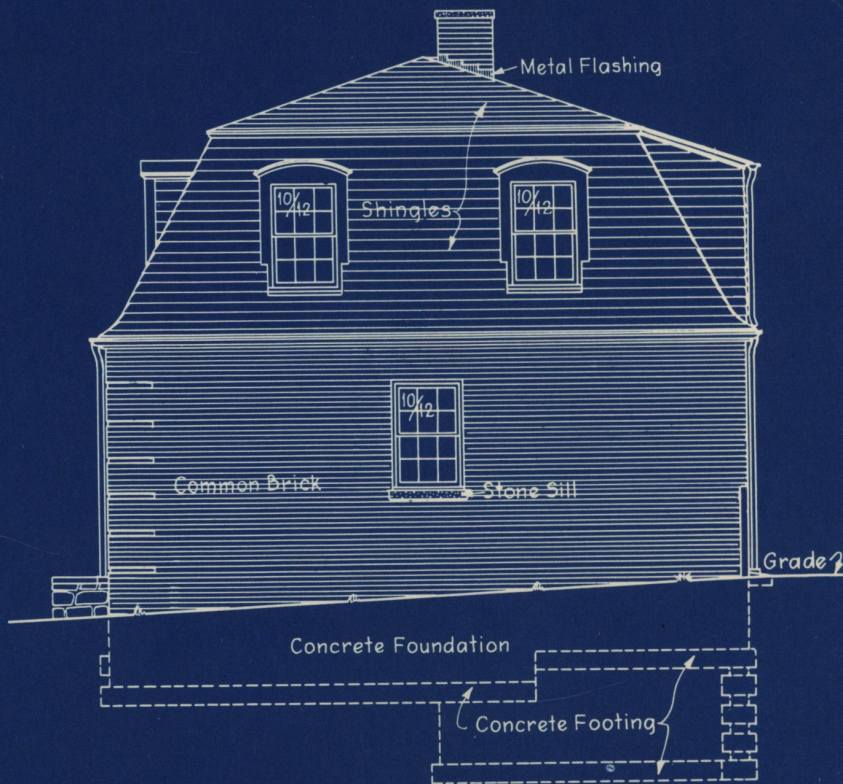
REAR ELEVATION

DESIGN NO. AB 103  
 AMERICAN BUILDER BLUE PRINT SERIES  
 Designed By  
**PHILIP B. MAHER** ARCHITECT  
 167 E. Erie St. Chicago, Illinois.  
 Simmons Boardman Pub. Corp. 105 W. Adam St. Chicago, Ill.

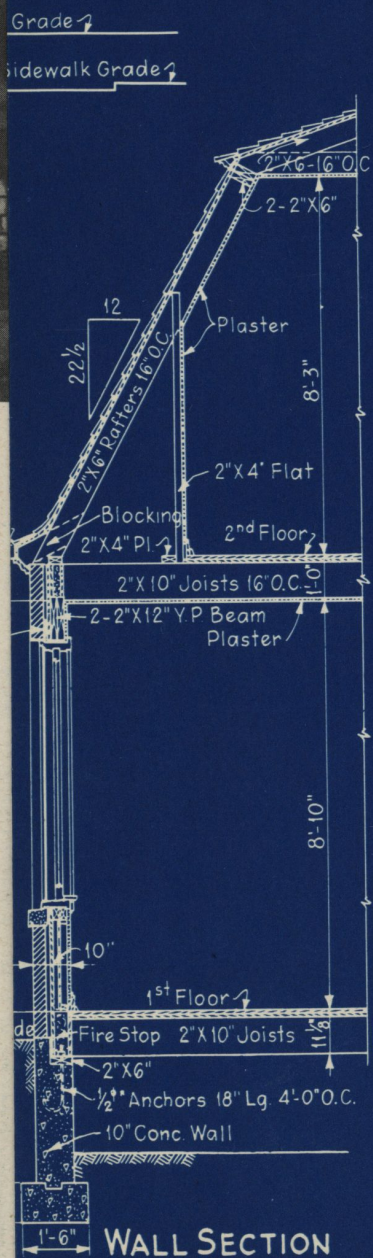




LEFT SIDE ELEVATION



RIGHT SIDE ELEVATION



WALL SECTION